

# Catforms Percentiles\*

School Name: **Sample Christian School**

Date: **April 1998**

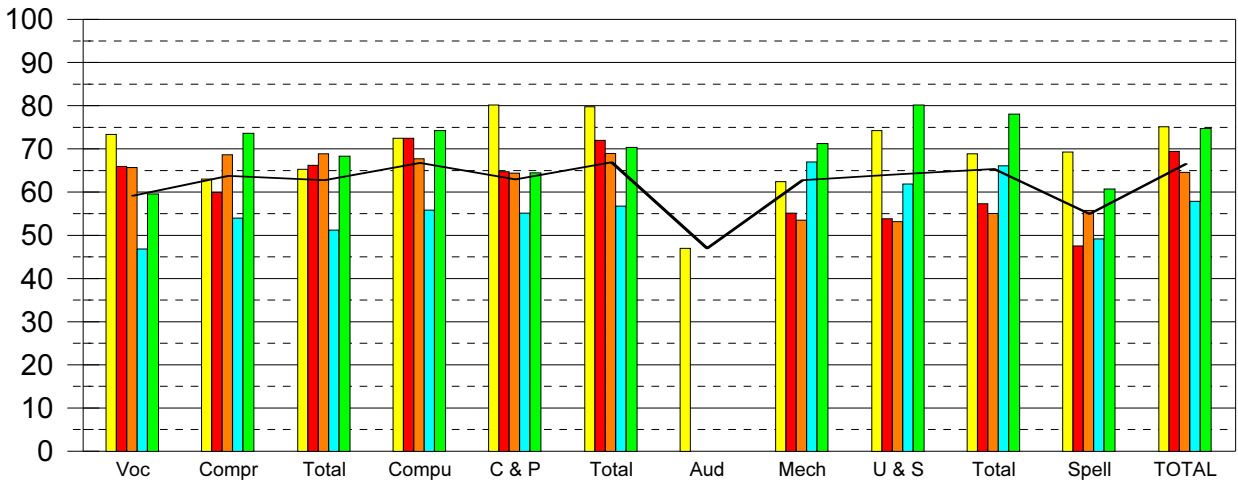
## Catforms Percentiles by Grade

Grade	#	READING			MATHEMATICS			LANGUAGE				BATTERY	
		Voc	Compr	Total	Compu	C & P	Total	Aud	Mech	U & S	Total	Spell	TOTAL
1	8	73	63	65	73	80	80	47	62	74	69	69	75
2	8	63											
3	5	70											
4	14	73											
5	9	54											
6	9	54											
7	14	49											
8	6	31											
9	10	54											
10	2	72	91	86	94	97	98		79	85	83	93	99
11	2	72	79	78	71	41	52		72	90	87	36	73
12	9	60	83	73	73	55	63		76	72	76	67	75
<b>ALL</b>	96	59	64	63	67	63	67	47	63	64	65	55	67

**Catforms Percentiles show how the student ranks among other students from schools that use our Catforms scoring. This page summarizes these percentile scores by grade, level, and entire school. It also provides details about the number of schools and tests to which your students are being compared.**

## Catforms Percentiles by Level

Level	#	READING			MATHEMATICS			LANGUAGE				BATTERY	
		Voc	Compr	Total	Compu	C & P	Total	Aud	Mech	U & S	Total	Spell	TOTAL
1	8	73	63	65	73	80	80	47	62	74	69	69	75
2	13	66	60	66	72	65	72		55	54	57	48	69
3	23	66	69	69	68	64	69		54	53	55	56	65
4	29	47	54	51	56	55	57		67	62	66	49	58
5	23	60	74	68	74	64	70		71	80	78	61	75



Level 1  
  Level 2  
  Level 3  
  Level 4  
  Level 5  
  All Levels

\*Scores are compared using the 1970 CAT percentiles from ##### tests from ### schools, 1995 and later.

Level 1 Catforms Percentiles are based on ##### Level 1 tests

Level 2 Catforms Percentiles are based on ##### Level 2 tests

Level 3 Catforms Percentiles are based on ##### Level 3 tests

Level 4 Catforms Percentiles are based on ##### Level 4 tests

Level 5 Catforms Percentiles are based on ##### Level 5 tests

These numbers are regularly updated and do not carry the same statistical weight as the 1970 CAT percentiles.